



# MONTHLY MEMBERSHIP PROGRESS REPORT

District 315B1

Results as of: 04/30/2019

GMT: SWADESH RANJAN SAHA

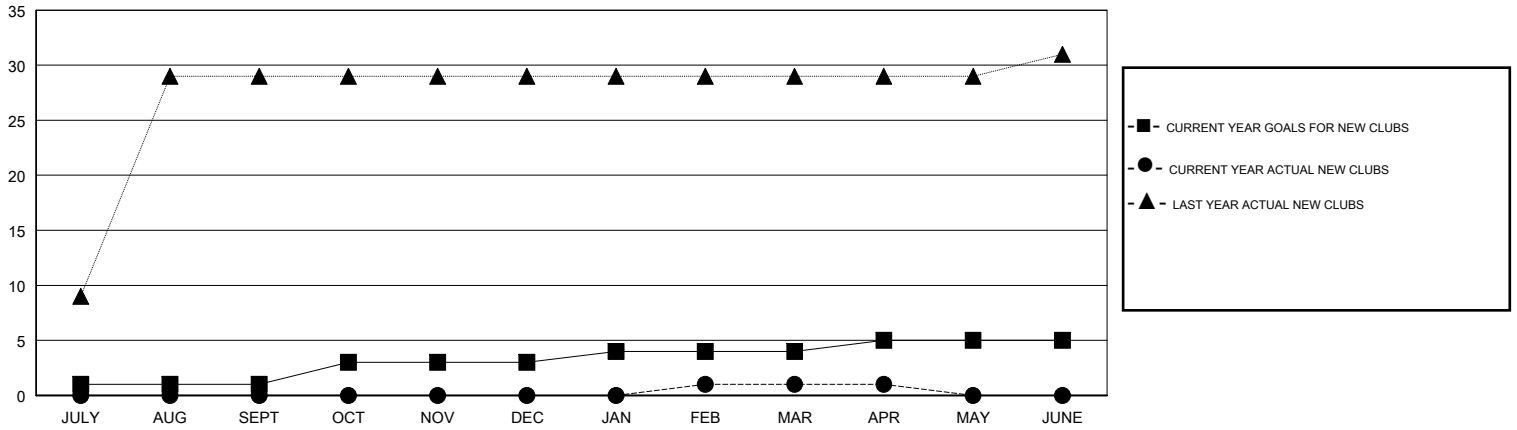
LOCATION REP OF BANGLADESH

GMT CA

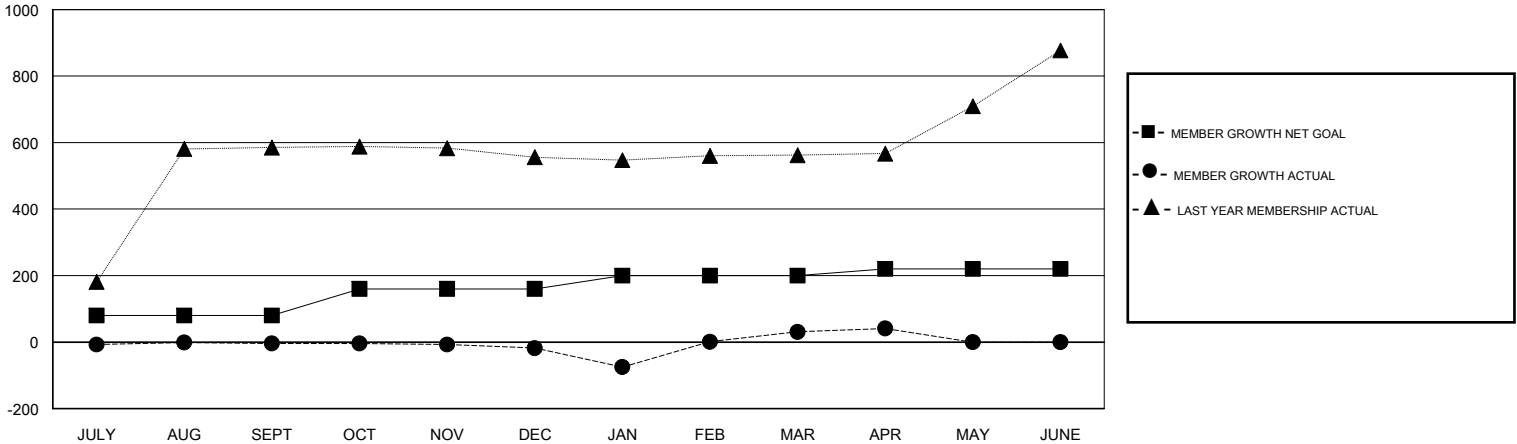
Clubs			
RESULTS FOR 2018-2019			
QUARTER	NEW CLUB GOAL	NEW CLUBS	DROPPED CLUBS
JULY/AUG/SEPT	1	0	0
OCT/NOV/DEC	2	0	1
JAN/FEB/MAR	1	1	3
APR/MAY/JUNE	1	0	0

Members			
RESULTS FOR 2018-2019			
QUARTER	MEMBER GROWTH NET GOAL	MEMBER GROWTH ACTUAL	DROPPED MEMBERS ACTUAL (including transfers)
JULY/AUG/SEPT	80	23	27
OCT/NOV/DEC	80	26	40
JAN/FEB/MAR	40	162	89
APR/MAY/JUNE	20	11	1

GOALS AND ACTUAL NEW CLUBS CUMULATIVE



GOALS AND ACTUAL MEMBERS CUMULATIVE



DROPPED CLUBS: 4	36 CLUBS OF 195 ADDED 1 OR MORE NEW MEMBERS	<u>GENDER DISTRIBUTION</u>	
DROPPED MEMBERS		MALE	3,821 (80.85%)
DECEASED	1	FEMALE	905 (19.15%)
CLUB CANCELLED	84	Women Percentage Fiscal Year Goal: 0%	
OTHER	72	TOTAL FAMILY UNIT MEMBERS	1,837
TOTAL	157	FAMILY MEMBERS PAYING HALF DUES	1,336

[CLICK HERE FOR CUMULATIVE MEMBERSHIP DATA](#)